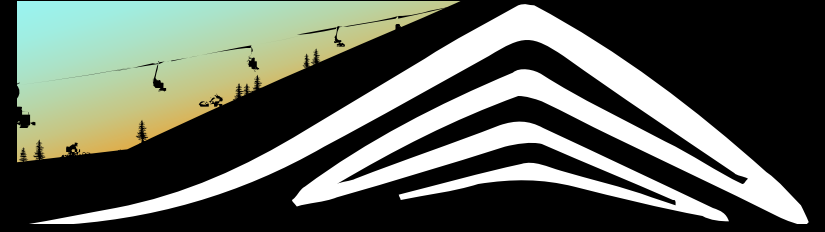


HUDSON BAY MOUNTAIN RESORT

2025 | Summer MTB Forum



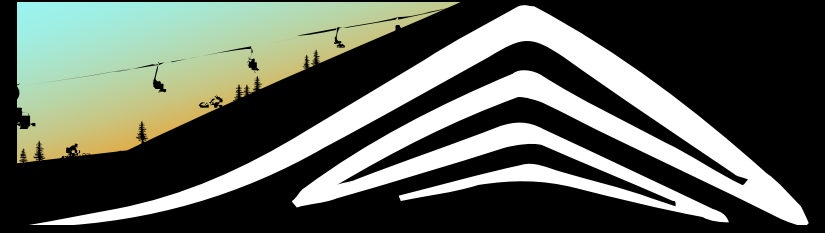
TONIGHT'S AGENDA

- 6:00 PM** - Welcome & Informal Mingling
- 6:30 PM** - Forum Introduction (Lex Rei-Jones)
- 6:35 PM** - Vision & Resort Strategy (Gary + Gavin)
- 6:45 PM** - MTB Development Plan (Gavin + Lex)
- 7:10 PM** - Q&A / Open Discussion
- 7:30 PM** - Feedback & Round-table
- 8:00 PM** - 1-on-1 Conversations/Networking
- 9:00 PM** - Forum Close & Next Steps



OUR VISION

2025 | Summer MTB Forum



4-Season Destination

A mountain resort rooted in community, adventure, and long-term growth

Inclusive & Family-Friendly

Trails for all ages and skill levels — designed for progression and confidence.

Smithers as a Regional Hub

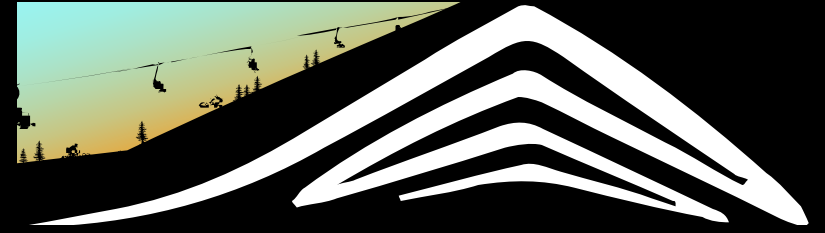
Tied to BC's tourism economy, supporting local jobs and infrastructure

Environmentally Responsible

All trails stay within the approved footprint, aligned with existing EA

WHY MOUNTAIN BIKING?

2025 | Summer MTB Forum



Community Resilience & Youth Retention

Supports healthy lifestyles and helps engage youth through skill-building and sport

Tourism Driver

Mountain biking attracts summer visitors and aligns with BC's recreation and tourism goals.

Economic Impact

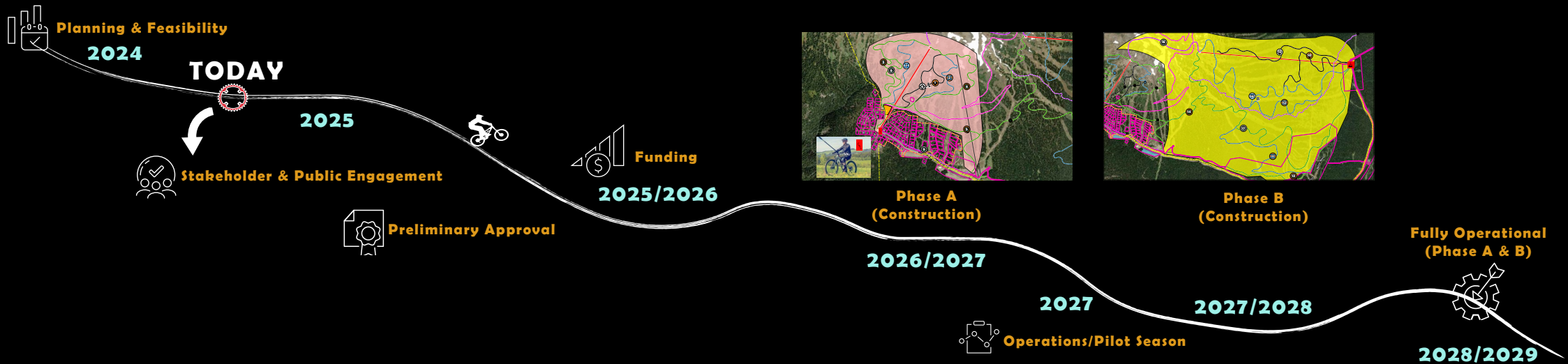
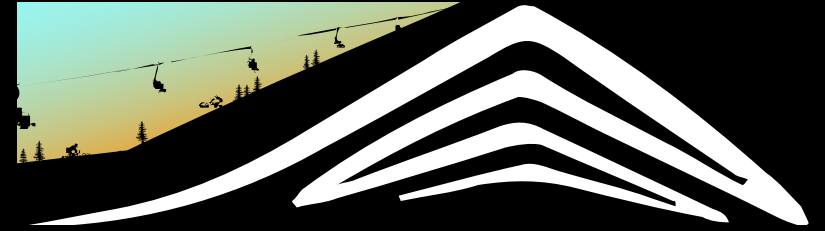
In 2023, BC's tourism sector generated **\$22.1B in revenue, \$9.7B in GDP,** and employed over **125,000 people.**

Aligned with Destination BC

Supports the People, Planet, Prosperity framework for sustainable tourism and community benefit

PROJECT TIMELINE

2025 | Summer MTB Forum

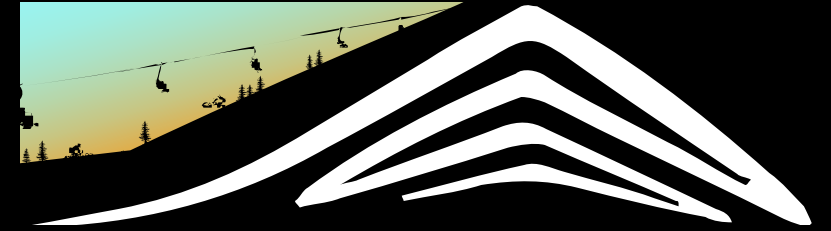
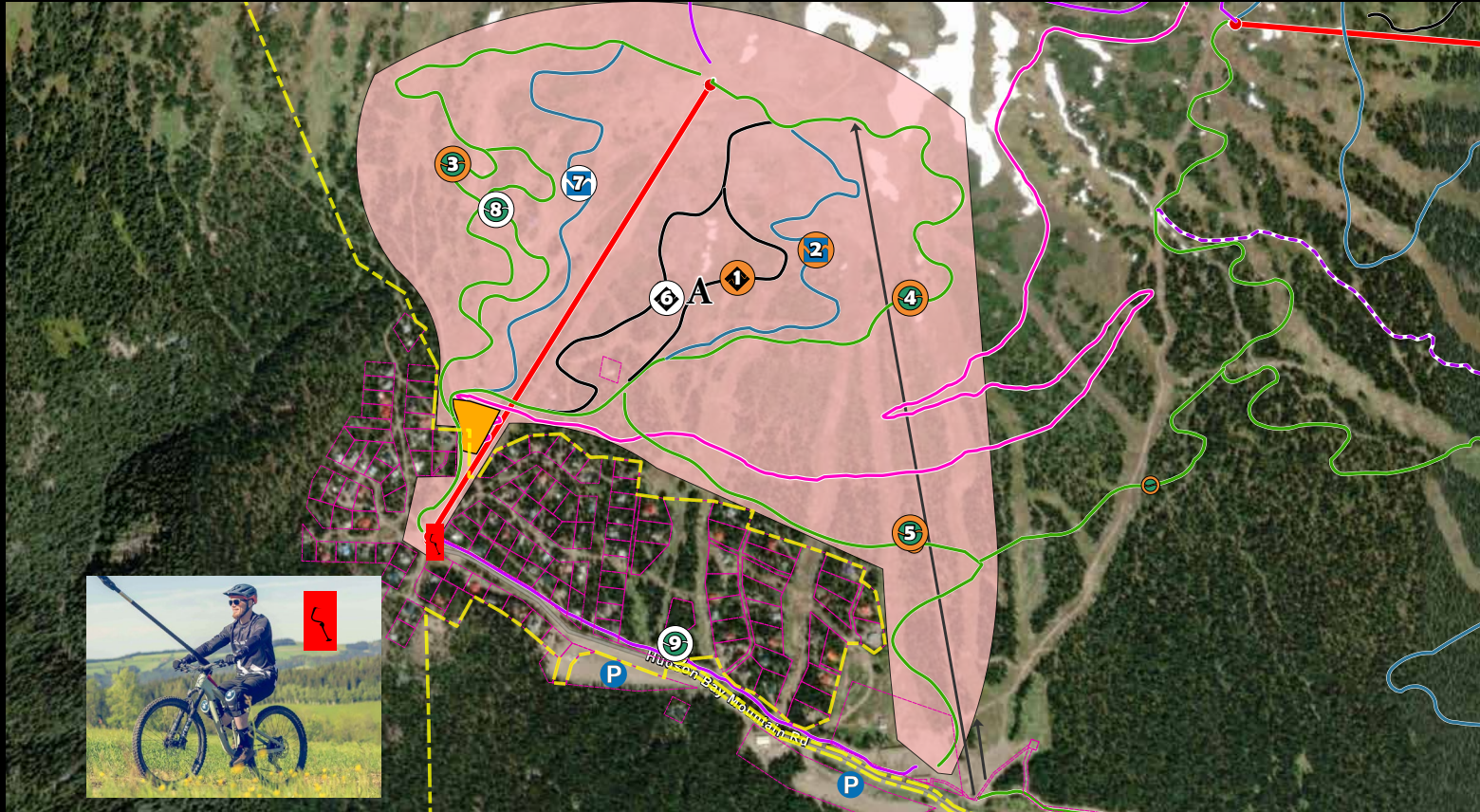


Phased development from early feasibility to full lift-access summer operations (2024–2029)

PHASE A - OVERVIEW

2025 | Summer MTB Forum

Family-friendly zone with Easy-Loop access and progressive flow trails



LEGEND

CRA	Lot Parcels	Phase A: MTB Summer Development
Round The Mountain Trail	Bike Park/Skills Zone	
Beginner Trail	Intermediate Trail	Advanced Trail
Parking	Lift (Easy-Loop)	Freeride/Flow Trail
		Technical Downhill Trail

FREERIDE/DOWNHILL TRAILS

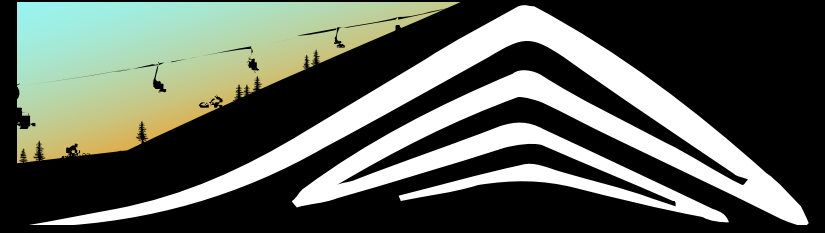
1	Freeride/Flow Trail	488 m
2	Freeride/Flow Trail	826 m
3	Freeride/Flow Trail	1,596 m
4	Freeride/Flow Trail	1,605 m
5	Freeride/Flow Trail	1,070 m
6	Advanced Technical Downhill Trail	738 m
7	Intermediate Technical Downhill Trail	886 m
8	Beginner Technical Downhill Trail	585 m

CONNECTOR TRAIL

9	Beginner Uphill/Enduro Trail	835 m
---	------------------------------	-------

INFRASTRUCTURE UPGRADES

2025 | Summer MTB Forum



Easy-Loop & Core Infrastructure

- Reuses existing Prairie T-Bar to minimize disturbance
- Designed for safety and accessibility across all rider levels
- Hardware attachments, engineering sign-off, and on-site installation included

Boardwalk & Environmental Enhancements

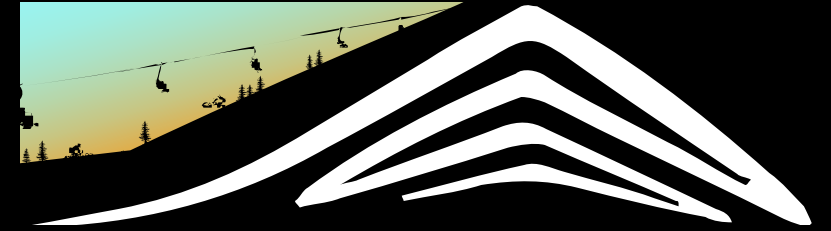
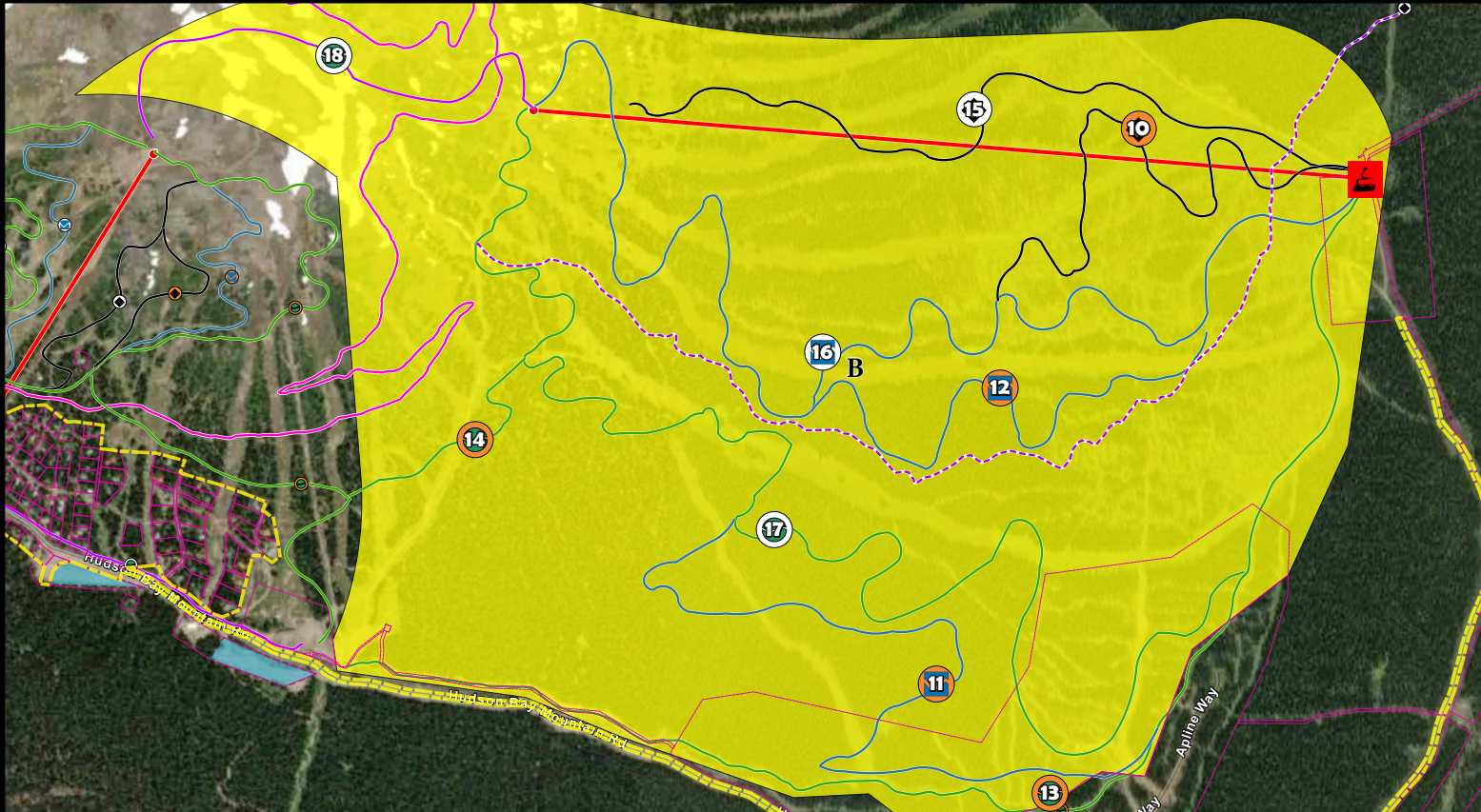
- Boardwalks proposed in steep and rocky terrain (15–20% grade)
- Improves accessibility while preserving natural terrain and minimizing earthworks
- Boardwalks to be engineered, fabricated, and installed as needed
- Supports safe trail flow through sensitive alpine zones

Here's a short demonstration of the Easy Loop system in action.

PHASE B - OVERVIEW

2025 | Summer MTB Forum

Advanced trail network with chairlift access and event-ready terrain



LEGEND

CRA	Lot Parcels	Phase B: MTB Summer Development
Round The Mountain Trail	Backdoor Trail	
Beginner Trail	Intermediate Trail	Advanced Trail
Parking	Chair Lift	Freeride/Flow Trail
		Technical Downhill Trail

FREERIDE/DOWNHILL TRAILS

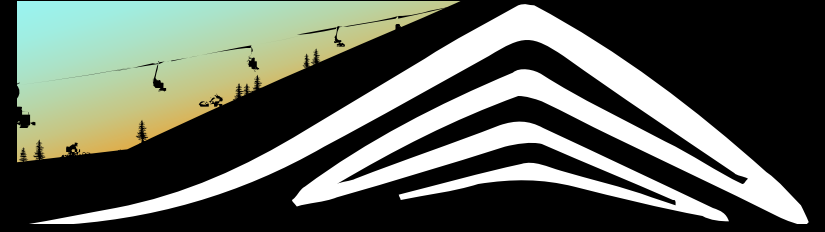
10	Freeride/Flow Trail	1,578 m
11	Freeride/Flow Trail	2,228 m
12	Freeride/Flow Trail	1,335 m
13	Freeride/Flow Trail	3,231 m
14	Freeride/Flow Trail	592 m
15	Advanced Technical Downhill Trail	1,812 m
16	Intermediate Technical Downhill Trail	3,532 m
17	Intermediate Technical Downhill Trail	4,273 m

CONNECTOR TRAIL

18	Beginner Connector Trail
----	--------------------------

ENVIRONMENTAL STEWARDSHIP

2025 | Summer MTB Forum



Approved Development Area

All trails remain within the resort's existing CRA and follow provincial processes

Crater Lake Collaboration

HBMR is open to joint improvement efforts under a shared MOU — not assuming trail ownership or enforcement

Species & Habitat Mitigation

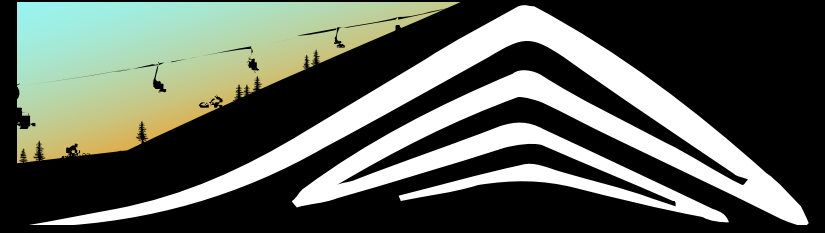
Trail planning accounts for alpine sensitivity, including mountain goats and red-fawn lichen

Respectful, Ongoing Process

Project team is committed to consultation, feedback, and long-term environmental alignment

COMMUNITY INTEGRATION

2025 | Summer MTB Forum



Youth & Job Pathways

Creating opportunities for local youth through mentorship, guiding, and trail crew roles

Expanded Year-Round Operations

Seasonal staffing supports consistency, monitoring, and community engagement

Access, Parking & Trail Etiquette

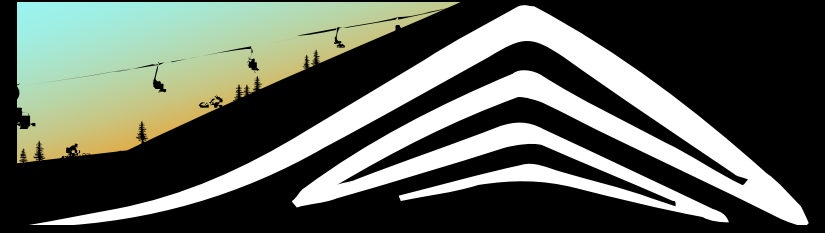
Public signage, parking strategy (P2 + P3), and e-bike policy enhance shared use

Inclusive Tourism & FN Partnership

Initiatives support Indigenous inclusion and align with Destination BC's tourism vision

FUNDING & IMPLEMENTATION

2025 | Summer MTB Forum



CERIP Investment in Skyline Chair

Upgraded in 2021 with provincial CERIP support — a capital boost for resort readiness

Partnership with SMBA

HBMR + SMBA co-applied for grant funding; no transfer of funds between organizations

Forum = MDA Requirement

Tonight's forum fulfills public engagement criteria under the Mountain Development Agreement

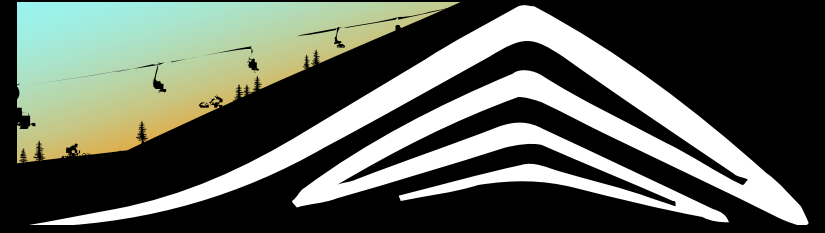
Strategic Regional Role

Only lift-access MTB resort in NW BC, supported by ~700 SMBA members and regional demand

CERIP = Community Economic Recovery Infrastructure Program

THANK YOU

2025 | Summer MTB Forum



Your feedback helps guide the next phase of summer development at Hudson Bay Mountain

QUESTIONS?

Let's Talk

Explore the boards, speak with our team, or fill out a feedback form

Next Steps

- What We Heard summary to follow
- Feedback forms available at tables and online